

Thornton-Le-Dale Village



Nature Trail

Name.....



Welcome to the village pond. We hope you enjoy your walk around the pond, answering the questions and completing the activities.

Some of the answers may be on the display boards around the pond – keep your eyes open!

You will also see magnifying glasses on stands. Use them to take a closer look at leaves and any other interesting things you find on your way.

Here we go!

As you are walking around the trail, how many objects can you see beginning with the letter 'b' (or any other letter you want to pick before you begin the trail)?

Station 1

Look by the wall and you will see a pile of sticks and leaves. Can you see a hole at the bottom of the pile? What animal would live in here?

How does this animal protect itself?



Station 2 - Insects and Bugs



Activity – Roll the log (carefully – mind your toes!)

What can you see underneath the log?

Why do they live under the log? _____

What insects can you see painted on the Bug Hotel?

How many legs does an insect have? 2 / 4 / 6 / 8

Can you draw one of the insects on the Bug House?



There are more bughouses on the wall at the end of the toilets buildings

Station 3

What do you call a male duck? _____

What is a baby duck called? _____

How can you tell a male Mallard duck from a female Mallard duck?

What is the difference between our feet and a Duck?

Why do they have feet like this? _____

Where on the pond do you think the ducks will build their nests and why?

Can you spot a bird smaller than a duck with a black body and a red beak?

What is it called? _____



Station 4

What animal is the lower carving of? _____

Can you name the two colours this animal can be in the United Kingdom?

What do they do in winter? _____

Can you find another carving around the pond like the one at the top?

What is it? _____

Station 5

How many of your arms stretched out would you need to go around the big tree?

How old do you think this tree is? _____

If you look up into the tree, can you see a bird box?

Do you think a big or a small bird will nest in this box and why?



Can you guess what bird uses this box? _____

Station 6

Around this area if you look carefully you will see boxes in the trees.

What are they used for and how many?

Why do some boxes have smaller holes when others are bigger?

Can you name some small birds? _____

Can you see any birds? _____

Draw the bird you have seen:

There are more boxes on the end of the toilet building

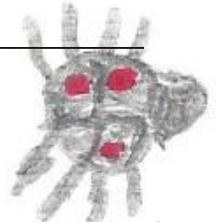
Station 7

Look up high into this tree.

What is different about this box to the others you seen have seen?

What do you think lives in this box? _____

How does this animal find its food? _____



Station 8

How about stopping to have something to eat and drink?

While you are having a break, why not make a picture from objects that you find around the area (twigs, leaves, etc.)? You could make it on the paving stones near the picnic tables, or on the table. (Please tidy up when you have finished.)

If you have a camera, take a photograph of your picture and send it to email address - tldvillagehub@gmail.com

We will post the photos on our village hub website

Can you see the bird carved on the tree by the pond?

What type of bird is it? _____

Can you give it a name? _____

Station 9

What is the difference between the water in the beck and the pond?

If you look into the beck, you can see that somebody has built something.

What do you think it was for? _____

Station 10

Here are two trees close together. Close your eyes and feel each tree. How do they feel different?

Station 11

This is the pond dipping area. You will need a net and, if possible, a container. (If not, put the plug in the sink, put in some water and gently put in your catch.)

If you have put your catch in the container, use the magnifying glass to look at them.

Can you name what you have caught?



When you have observed what you have caught, carefully return it to the pond. Draw a picture of one of the creatures:

Station 12

What is this woodcarving of? _____

What colour are the feathers on this bird? _____

What does it eat? _____

Station 13

What is this bird? _____

Why does it have big eyes? _____

When does it feed? _____

What does it hunt? _____

Station 14

Here is the Performance Area - this is the end of the trail.

In this area you can finish your trail sheets, have a sing or act out a play.



You could play **The Bat Game**.

One person is blindfolded (the bat), and the rest of you act as moths. The bat calls out “bat “and the moth replies “moth”. The bat then has to find the moths by listening to where the sounds are coming from.

If a moth is caught, they become the bat.

This is the end of the trail – Well done! and thank you for taking part

When you go home, you might want to find out some more about the things you have seen today. Why not have a look st some books or on the computer to help you.

For example Yorkshire Wildlife Trust: <http://ywt.org.uk>

You can use this page for writing or drawing more pictures

Thornton-Le-Dale Village Hub

<http://thorntonledalevillagehub.org>